

WOMEN'S

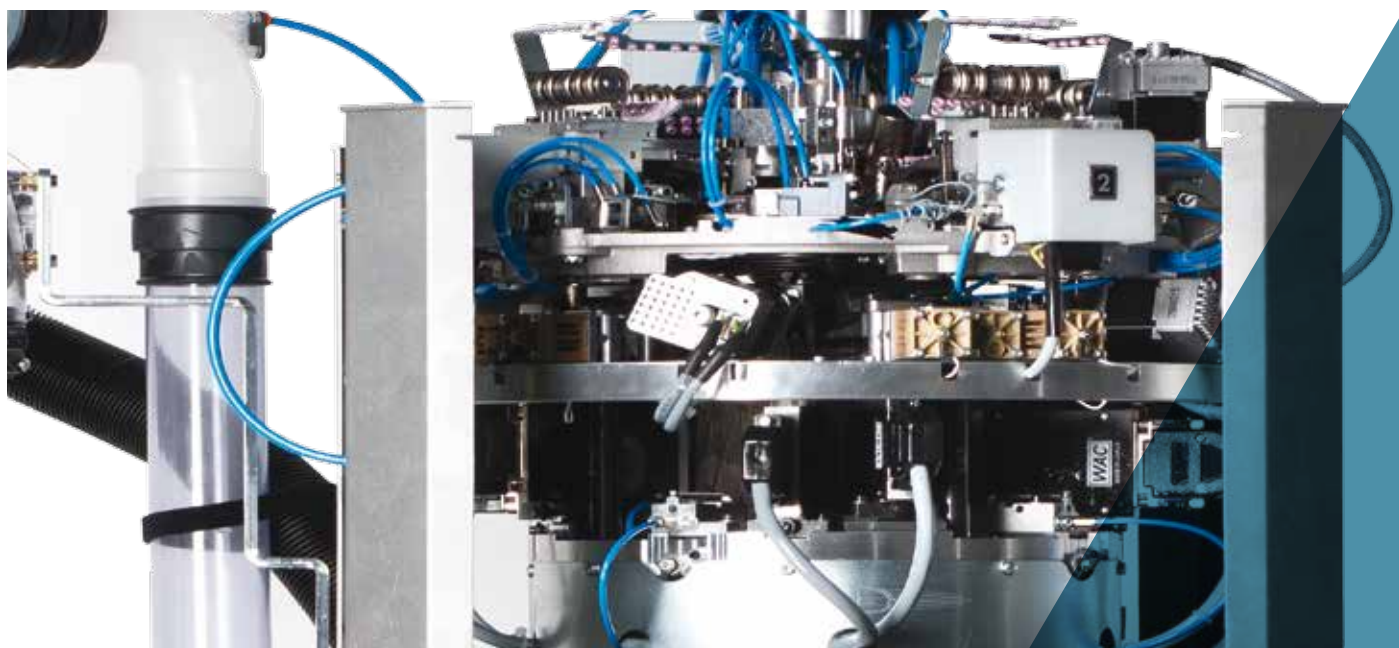
WOMEN'S SINGLE CYLINDER

LBOP



WOMEN'S SINGLE CYLINDER LBOP





All images in this brochure are indicative and not binding.

WOMEN'S SINGLE CYLINDER LBOP

Single cylinder 4-feed machine with electropneumatic controls, for the production of stockings, pantyhose in plain knit and/or "one-piece" seamless pattern. Reciprocated motion option on two feeds.

- 4 feeds single cylinder machine
- 6 pliers suction unit
- 24 yarnfingers
- Motorized sinkers cap, 2 motors
- 4 stitch cams with motorized control of heights
- Electronic selection units on each feed

MACHINE DIMENSIONS



Length 60 cm + yarn creel cm 145
Depth 60 cm + yarn creel cm 145
Height 136 cm + yarn creel cm 265

MACHINE WEIGHT



Machine 230 kg
Yarn creel 70 kg

CERTIFICATION



Green
Label

WOMEN'S SINGLE CYLINDER LBOP

TECHNICAL DATA

MODEL	CYLINDER DIAMETER	GAUGE	NEEDLE THICKNESS
LBOP (Needle latch 8,7mm)	4" 1/2	32	0.34 mm

Above data are indicative and not binding.

STANDARD DEVICES

- ➊ 40 reels yarn creel
- ➋ Sock ejection hood
- ➌ Yarn waste filter
- ➍ Stepper motor controlled suction valve
- ➎ Rotary or fixed antitwist device
- ➏ 4 pull-out stitch unit with motorized heights control
- ➐ 6 pliers suction unit (plates, hooks and cut-pick)
- ➑ 8 yarn sliding sensors
- ➒ Pneumatic/mechanic radial plating on first yarnfinger
- ➓ Extra latch-opener for open-work mesh
- ➔ 2 Dinema yarn recovering device in reciprocated movement

OPTIONAL DEVICES

- ➊ DREAM or DREAM ONE device for stretching socks in ejection
- ➋ 2,2 Kw suction fan
- ➌ Ethernet board for connection to Dinema Nautilus data collector system
- ➍ Dinema YoYo yarn feeder, 12 max
- ➎ Dinema Plus medical or bare elastomer yarn feeders, 4 max
- ➏ Yarn sensors, 24 max
- ➐ knit-in device kit

SUITABLE YARNS

The machine is designed to be used with the following yarns:

- Nylon
- Filanca
- Elastomers (bare, single or double cover)
- Stretch, for transparent items

POSSIBLE KNITTINGS

The standard machine can perform the following knittings

- Reciprocated "one piece"
- Plain knit
- 1:1, 3:1, 5:1, 7:1, 1:3 fixed mesh, micromech and diagonal mesh
- Several laid-in pattern (piquet effect), tucking, bikini pattern, cut boss etc
- Supp-hose on 2 or 4 feeds
- Plating plain knit on 2 or 4 feeds

WOMEN'S SINGLE CYLINDER LBOP



NUMBER OF COLORS

Number of colors

Working feeds 1-2-3-4: one color each course

PERFORMANCES

	4" 1/2 CYLINDER DIAMETER
GAUGE	32
MAXIMUM SPEED	600 RPM

Above data are indicative and not binding.

DISCLAIMER:

Speed may need to be adjusted according to the inclination of the stitch cams, to the mechanical parts in use and to the yarn.

N.B. All data in the brochure are for information only and subject to change without any prior notice from Lonati SpA.

ALLOWED PERFORMANCES

CHART OF MAXIMUM ALLOWED SPEED IN PLAIN KNIT IN RELATION TO THE INCLINATION TO THE STITCH CAMS	
Stitch cam inclination	Maximum allowed speed in plain knit
40°	600
48°	500
55°	450

NUMBER OF POSSIBLE COLORS ON EACH COURSE ACCORDING TO THE NUMBER OF WORKING FEEDS	
Working feeds	Number of colors
1° - 2° - 3° - 4°	1 each course

AVAILABLE CYLINDERS	
GG75-0,34	448 - 480
GG70-0,41	368 - 416
GG54-0,50	288 - 236

Above data are indicative and not binding.

DISCLAIMER:

All data related to maximum allowed mechanical speed may require to be reduced (to be adjusted according to functional tests on the machine) when using specific particular yarns and/or knitting features.

Lonati is recommending needles from
GROZ-BECKERT®

WOMEN'S SINGLE CYLINDER LBOP

ELECTRIC POWER CONSUMPTION

Machine maximum speed 500 r/m, "Average" standard pantyhose program for 1 hour.

MACHINE MODEL	CONSUMPTION kWh
LBOP	0.540

COMPRESSED AIR CONSUMPTION

Gauge pressure 6 bar, humidity 0% dryer outlet temperature 18° C – 21° C. With pantyhose ejection blow and suction mouth cleaning.

MACHINE MODEL	CYCLE TIME	CONSUMPTION PER PANTYHOSE	CONSUMPTION PER MINUTE
LBOP	200"	NI 42	NI 13

SUCTION CONSUMPTION

Cylinder = 650/700 mm/H2O - **Suction mouth** = 650/700 mm/H2O - **Average consumption for all models** = 3 m³/min.

NOISE LEVEL

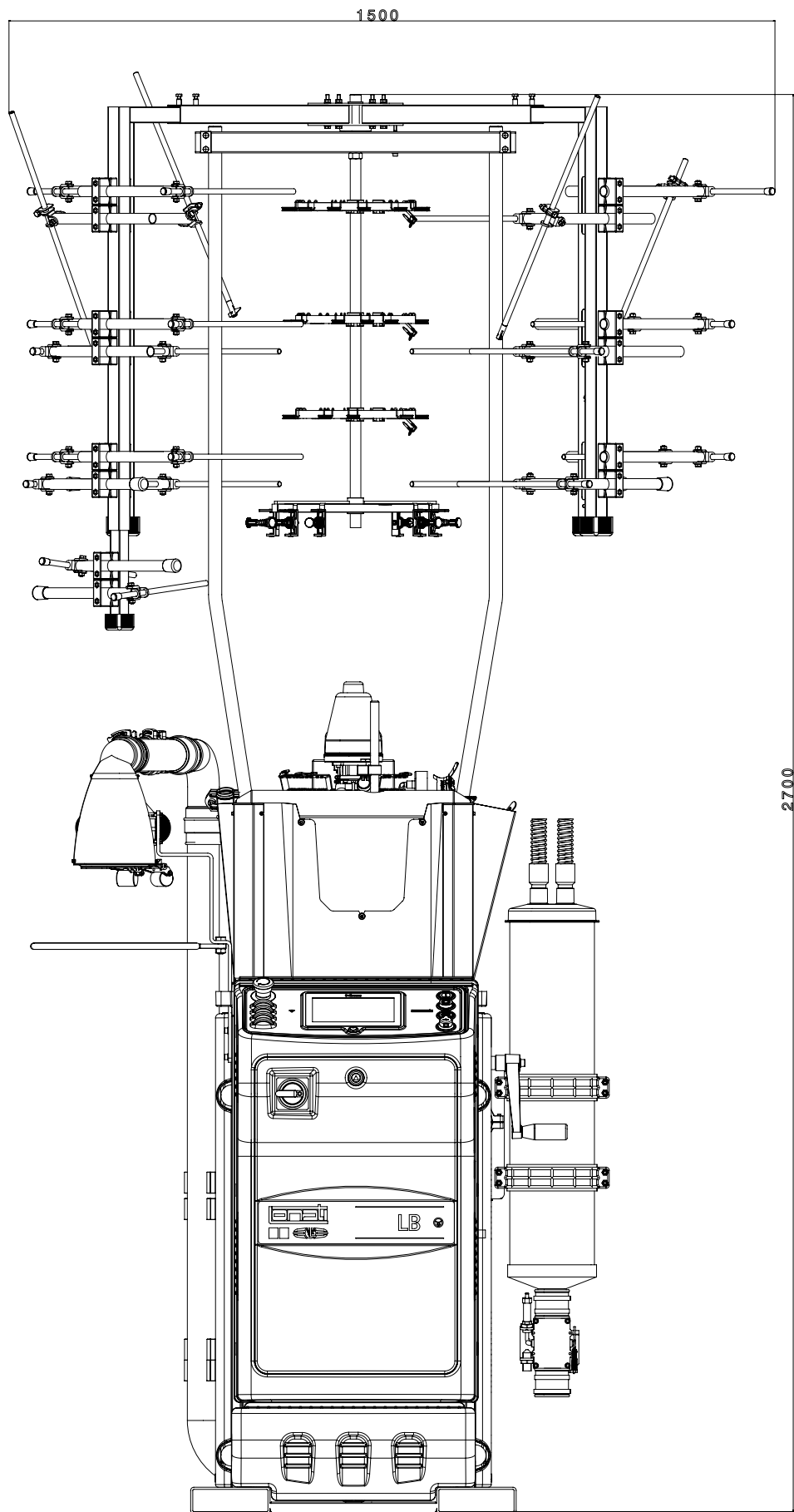
Machine average noise level, suction included LeqA = 74dBA

LUBRICANTS

Average consumption for 500/600 dozens: 1000 gr. - Lonati recommends: Fuchs Trax 14C - Kluber Tex Sintheso M32 – Esso Eil 0287

GREASE

For seals, bearings etc. Lonati recommends: Damping grease Nyogel 774F

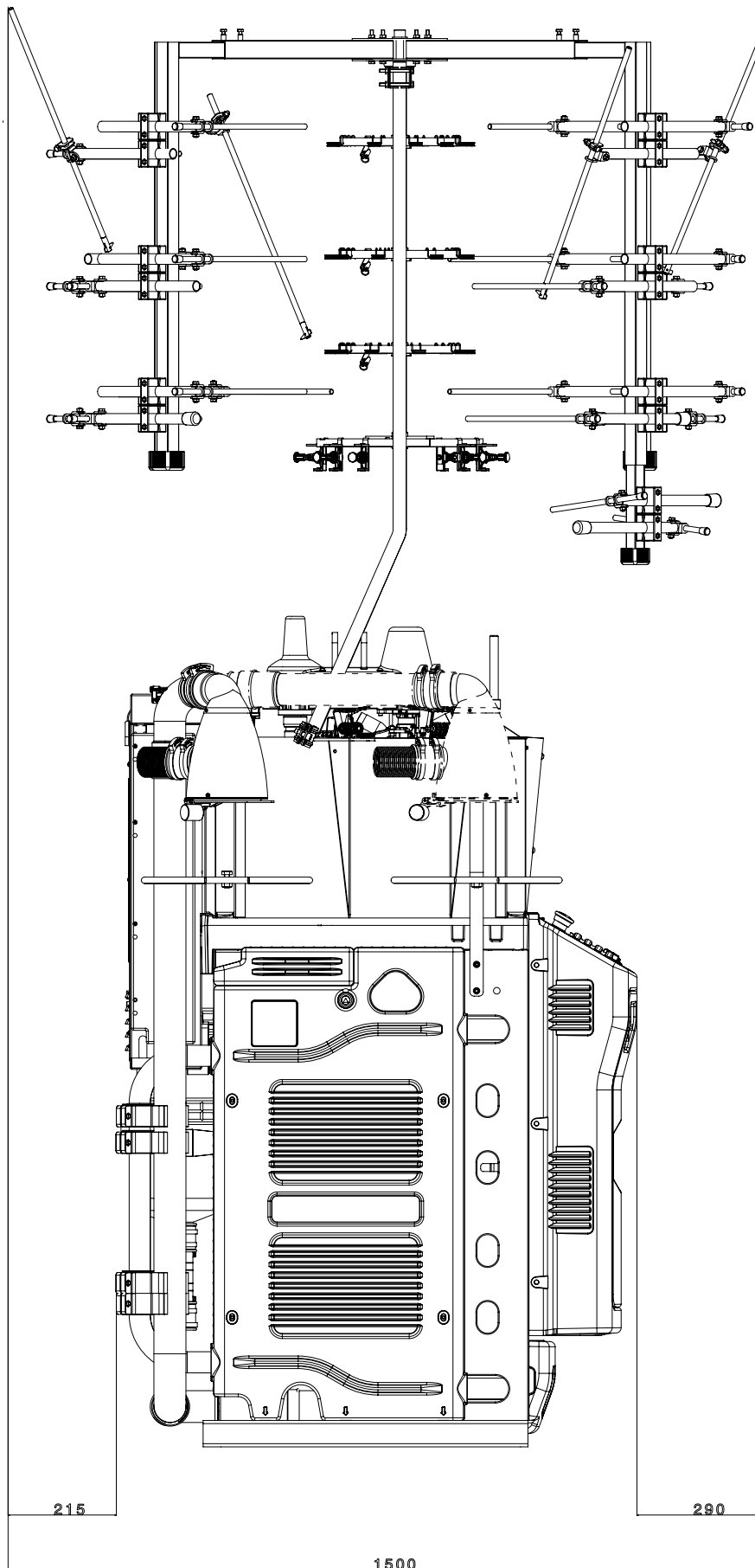


FRONT VIEW

Machine dimensions with 26 reels yarn creel

NOTE:

The picture may show fittings and equipment that are supplied on demand and not.

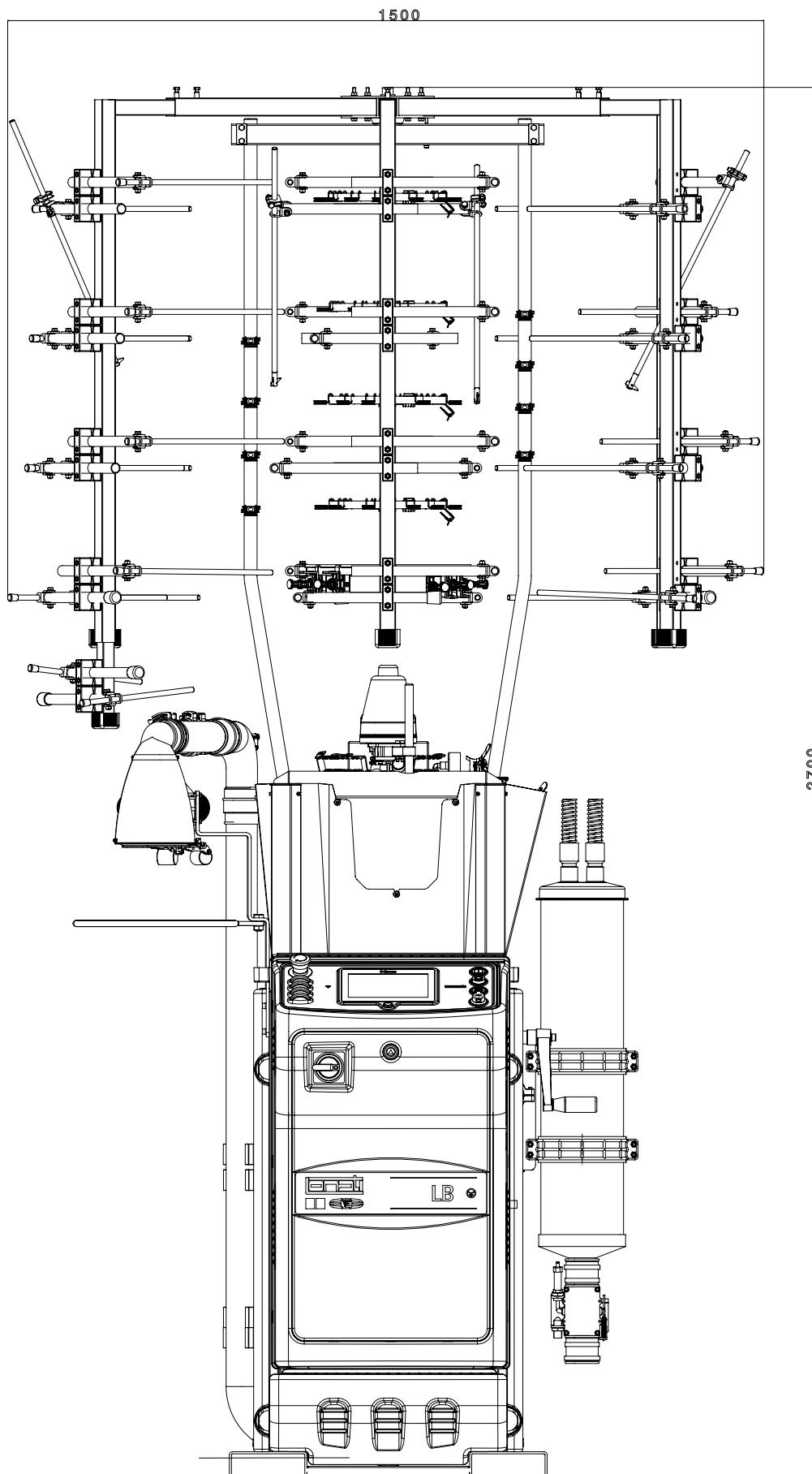


SIDE VIEW

Machine dimensions with 26 reels yarn creel

NOTE:

The picture may show fittings and equipment that are supplied on demand and not.

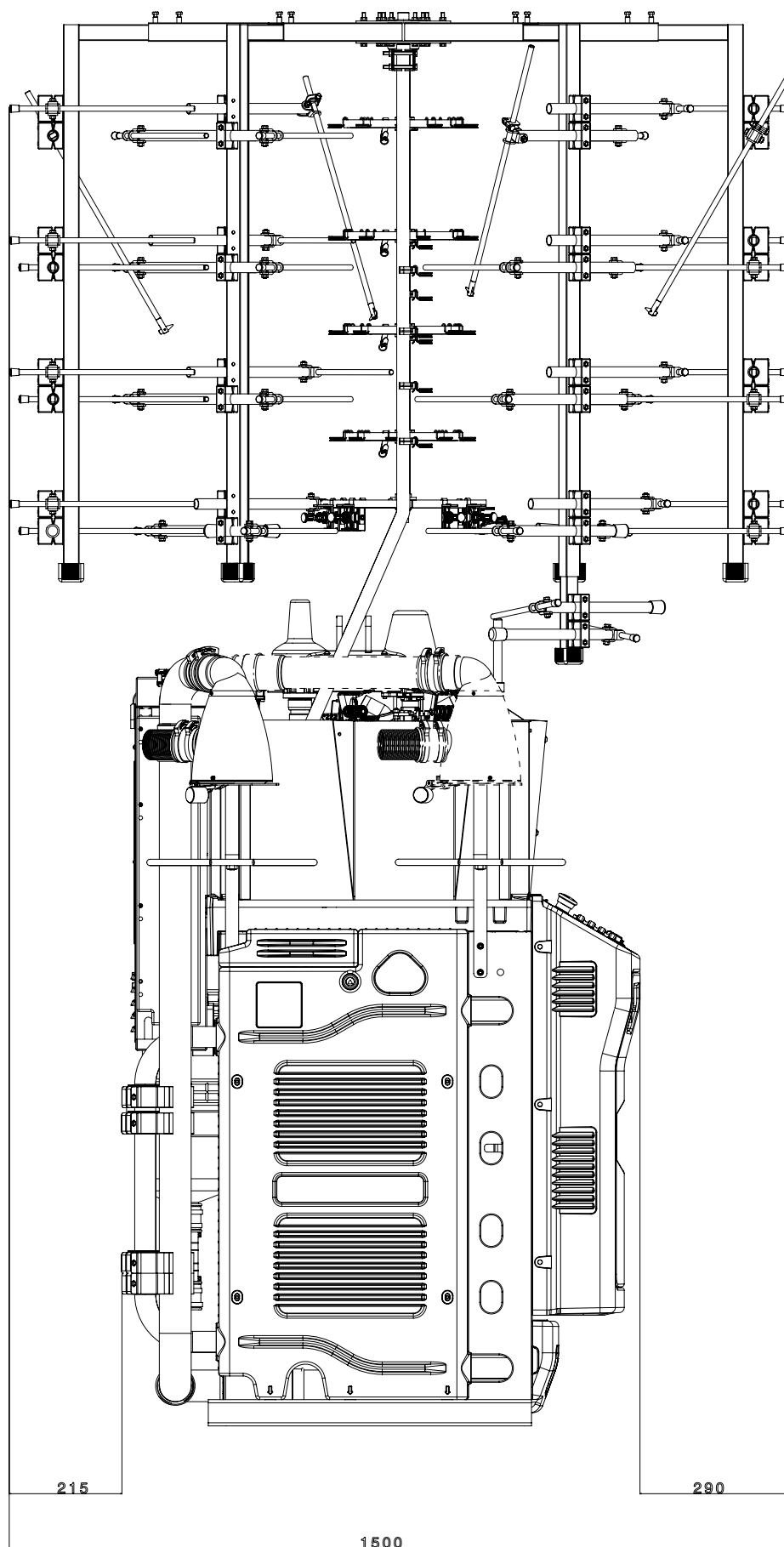


FRONT VIEW

Machine dimensions with 40 reels yarn creel

NOTE:

The picture may show fittings and equipment that are supplied on demand and not.



SIDE VIEW

Machine dimensions with 40 reels yarn creel

NOTE:

The picture may show fittings and equipment that are supplied on demand and not.





LONATI SPA

Via Francesco Lonati, 3 | 25124 Brescia (Italy)
Tel. +39 030 23901 | Fax +39 030 2310024
C.F.: 01469680175 | P.iva: 02096730961
info@lonati.com - www.lonati.com